



Preparations and Experiences at the Subnational level

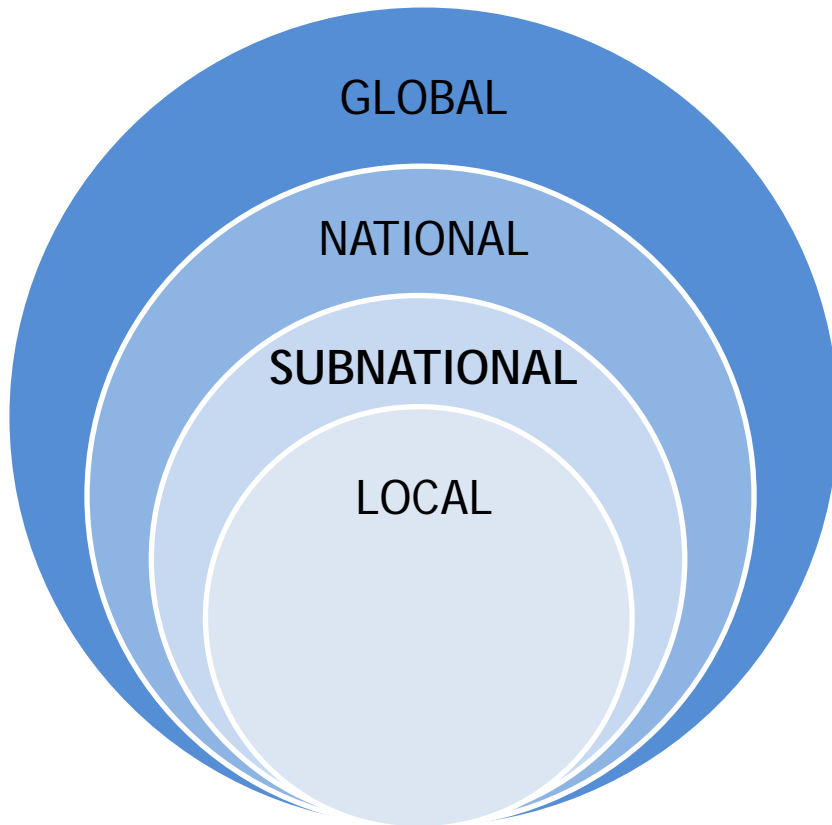


**Network of Regional Governments
for Sustainable Development**

Indicators, Geospatial Technology &
Disaggregation for SDG11 and its Linkages with
other SDGs

NYC, 3 June 2015

What is nrg4SD?



- Established in 2002
- International organization representing regional governments and associations of governments at global level

MISSION

- Seek greater **international recognition** of the importance and contributions of regions to Sustainable Development
- Promote **understanding, partnerships, projects and experience exchange**

Regions for Urban Sustainability

Key relevant themes for regional governments on the urban agenda:



Working Group on SD Indicators



- Working Group on Sustainable Development Indicators at the Subnational Level: Azuay, Catalonia, Fatick, Rio de Janeiro, São Paulo and Wales
 - Institutional framework: thematic and sectorial integration
 - Exchange of best-practices and peer-review

Monitoring Framework

Synergies/Complementarities with national monitoring systems

Subnational Sustainable Development Strategies

Existing Subnational Statistical Offices

Subnational Councils for Sustainable Development

- Guidelines and comparable metrics;
- Science-policy interface;
- Coordination, cohesion, ownership and accountability
- Improved Reporting capacity and tools

Civil Society Engagement

Azuay

Radical democracy → local
parliaments

Participatory planning for grassroots
indicators and data collection



Wales

Well-being of Future Generations Act 2015
Based on "The Wales We Want" consultations



Network of Regional Governments
for Sustainable Development

Innovative Tools for Data

São Paulo

- Unmanned Aerial Vehicle (UAV)
Fast and low-cost collection of high-resolution images



- Monitoring through Satellite Images

Identifies modifications to land-use and environmental infractions



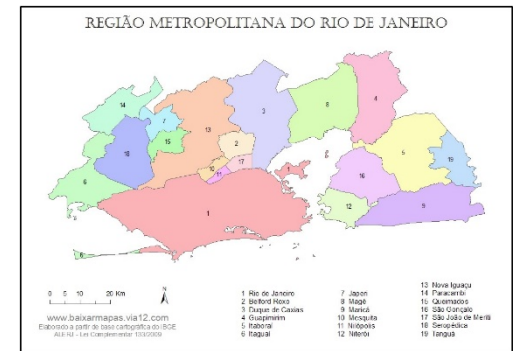
Network of Regional Governments
for Sustainable Development

City-Region Approach

Rio de Janeiro

Metropolitan Government Integration Chamber

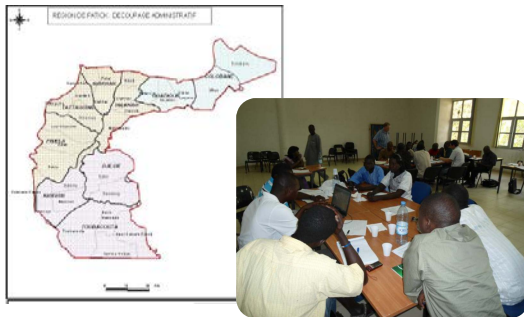
Multilevel governance mechanism for common planning and joint action



Fatick

Regional Integrated Development Plan

Technical committee for collecting data through Geographic Information Systems - GIS



São Paulo

Green-Blue City Program

10 areas for municipal evaluation, ranking and access to funding

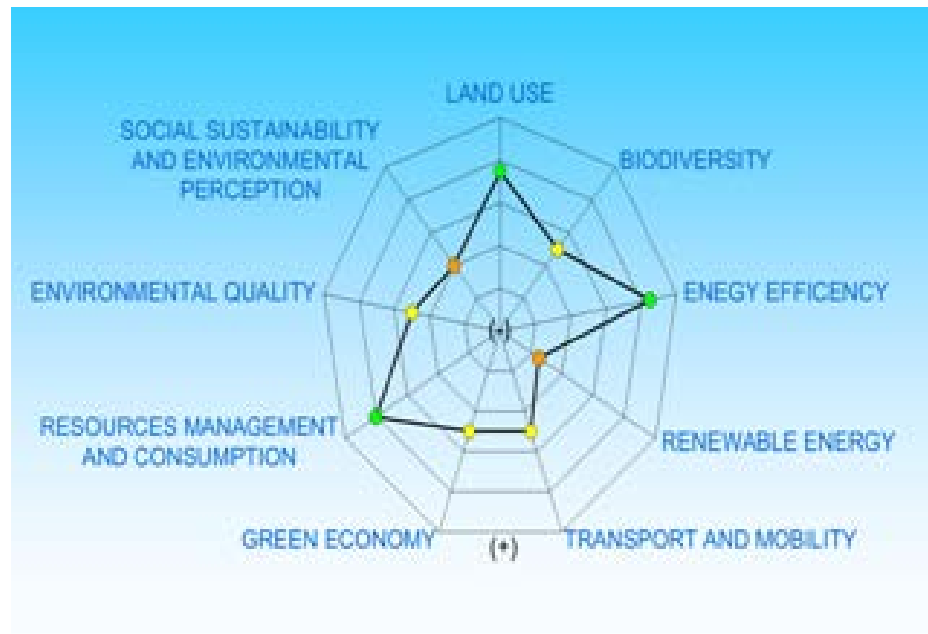
(Waste management, resilience, air quality and more)



Network of Regional Governments
for Sustainable Development

Assessment Reports and Environmental Data

- Identification of needs and emerging priorities
- Address critical gaps



Indicators from Member Regions

11.1 by 2030, ensure access for all to adequate, safe and affordable housing and basic services, and upgrade slums

Rio de Janeiro - % of residences situated in slums and % of inhabitants with access to all basic public services

Sao Paulo - housing deficit: amount of houses necessary to accomodate the existing urban population, by each municipality

Indicators from Member Regions

11.2 by 2030, provide access to safe, affordable, accessible and sustainable transport systems for all (...)

Rio de Janeiro - % of inhabitants using mass transport public services

Catalonia - People aged 16 or more that use public transport. By size of the home and main reasons for using it

	Comoditat/ menys estrès	Amb parada prop de casa	És més segur	És més ràpid	És més barat	Sense vehicle	Sense permís de conduir	Un altre membre de necessita el vehicle	Sense aparcament allà on van	Altres raons
Habitatge amb 1 persona	36,7	43,6	..	24,2	29,8	39,3
Habitatge amb 2 persones	46,2	38,3	..	24,3	32,8	34,3
Habitatge amb 3 persones	31,9	27,8	..	26,2	26,8	30,6
Habitatge amb 4 persones	34,5
Habitatge amb 5 persones o més
Total	36,5	32,5	8,4	26,6	29,8	32,6	9,6	4,4	8,4	3,3

Unitats: tant per cent sobre total de persones que utilitzen el transport públic.

Font: Idescat.

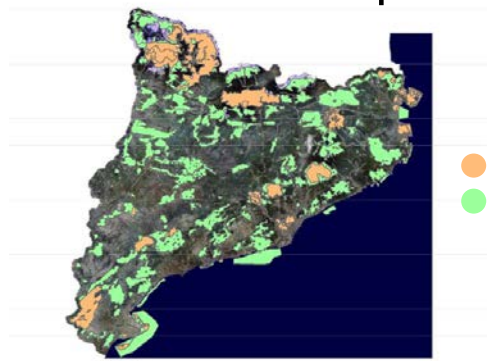
Indicators from Member Regions

11.4 strengthen efforts to protect and safeguard the world's cultural and natural heritage

Wales - % of natural protected areas, by type and number of visitors
(combining quality and also addressing 11.7 on access to green areas)

Sao Paulo - % of existing ecosystems surface under protection
mechanisms of Aichi Target 11

Catalonia - % of protected natural surface with high management
schemes with respect to total protected surface



- Natural spaces with special protection
- Natural interest and Natura 2000 spaces

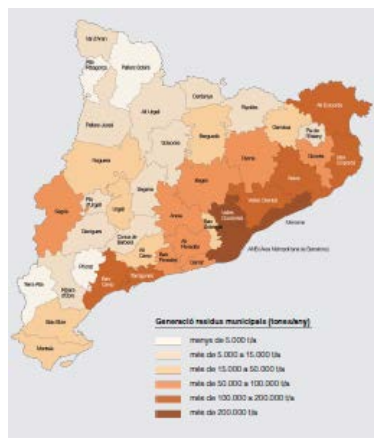
Indicators from Member Regions

11.6 by 2030, reduce the adverse per capita environmental impact of cities, including by paying special attention to air quality, municipal and other waste management

Municipal breakdowns of waste generation and treatment, as well as emission inventories, by type of pollutants and sectors are usually provided by regional statistical offices.

Catalonia - Atmospheric pollution. PM 10, lead and benzene, by city

Waste generation, by cities



Font: Agència de Residus de Catalunya

Waste treatment facilities, by types

Waste treatment. 2009-2013
Facilities. By types

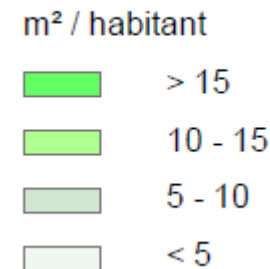
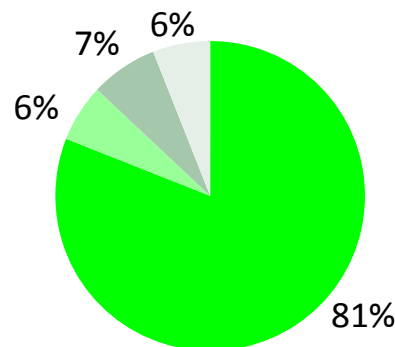
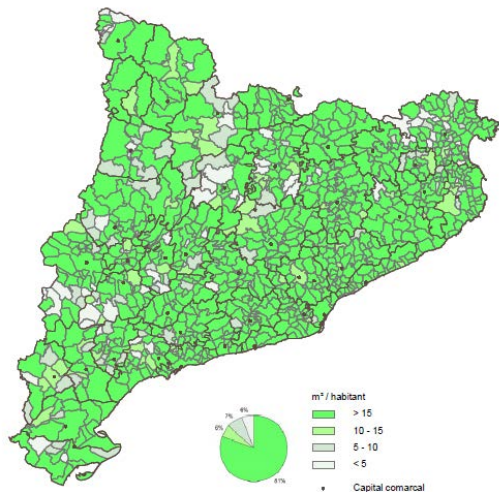
	2009	2010	2011	2012	2013
Industrial waste	730	764	811	815	918
Controlled tipping	20	22	15	15	21
Agriculture application	22	20	21	21	22
Composting	33	36	42	42	48
Physico-chemical treatment	20	21	22	26	29
Incineration	12	13	8	8	11
Anaerobic digestion	3	7	9	9	13
Collection and transfer	48	53	65	65	65
Valuation and recuperation	572	592	629	629	709
Storage	0	0	0	0	0
Municipal waste	478	516	545	553	561
Controlled tipping	25	25	25	25	25
Decantation plant	25	21	21	23	24
Civic amenity site (1)	383	425	452	455	463
Incineration	4	4	4	4	4
Biological treatment of OFMSW	23	23	25	25	24
Selection	2	1	1	2	2
Selection of light containers	12	11	12	13	13
Mechanical-biological treatment of REMAINDER	4	6	5	6	6

Source: [Agència de Residus de Catalunya](#).

Indicators from Member Regions

11.7 by 2030, provide universal access to safe, inclusive and accessible, green and public spaces, particularly for women and children, older persons and persons with disabilities

Catalonia - m² of open green areas per inhabitant



Thank you!

*Rodrigo Messias
Policy Officer*

www.nrg4SD.org

rmessias@nrg4sd.org



**Network of Regional Governments
for Sustainable Development**